



HB.916

TECH BOOK

m ipsum

Seatpost
Clamp Screw

5
N.m

Chainstay
Rocker Axle

20
N.m

NDS Dropout
Pivot Screw

25
N.m

Rear Axle

15
N.m

DS Dropout
Pivot Screw

25
N.m

Cable/Hose
Guide Screws

3
N.m

T47 Botton
Bracket Cups

50
N.m

Cable/Hose
Guide Screws

3
N.m

Shock Trunnion
Mount Screws

12
N.m

Bottle Cage
Screws

5
N.m

Rocker Axle

20
N.m

Shock Lower
Mount Screws

9
N.m

Chainstay Axle

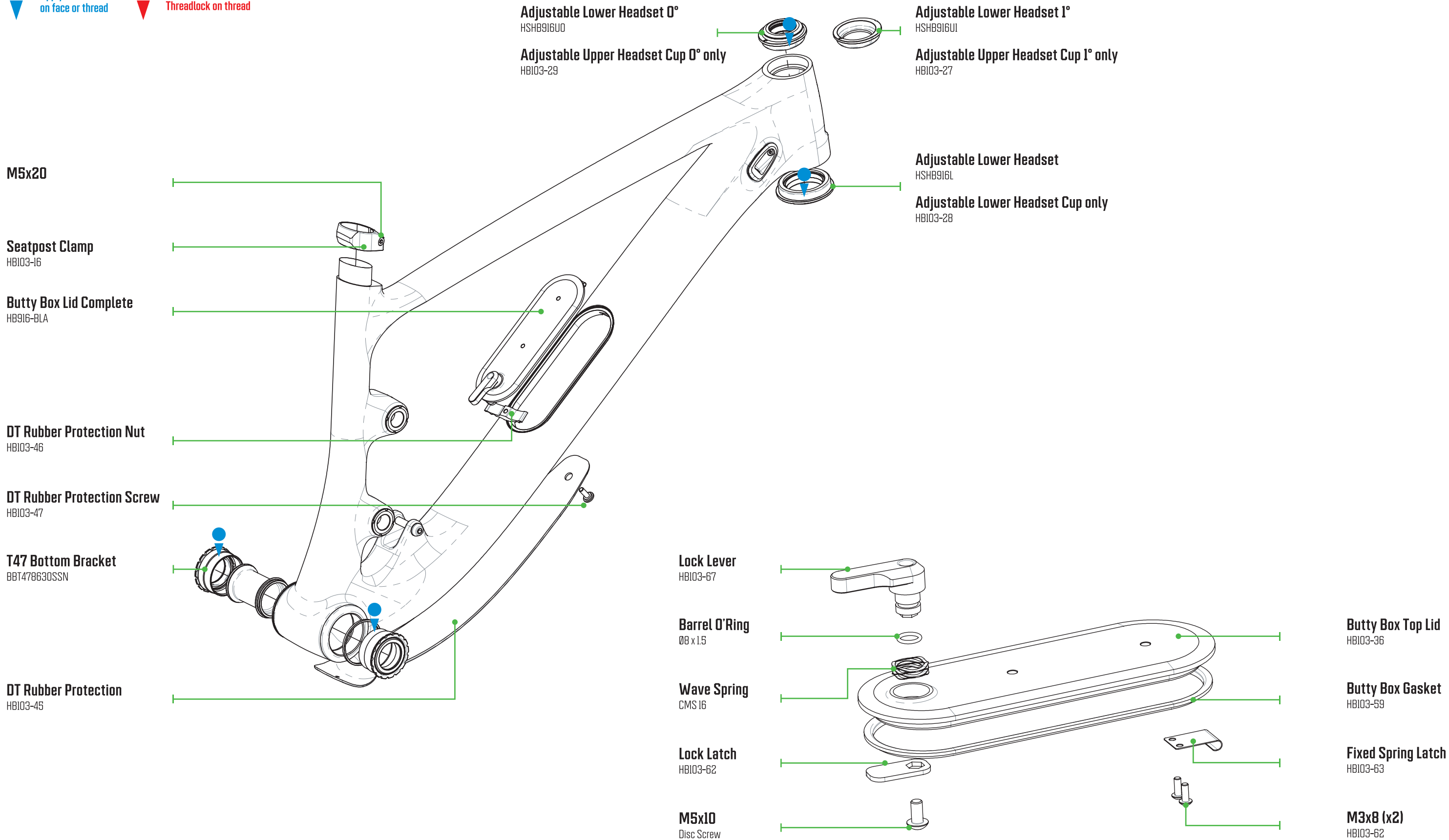
20
N.m

Idler Pulley
Screw

12
N.m

HB.916

TIGHTENING TORQUES





Apply Grease
on face or thread



Apply low strength
Threadlock on thread

12x21x3 Spacer x2
HB101-49

**Rocker/Seatstay Pivot
Bearing x2**
12x21x8

**Rocker/Seatstay
Pivot Screw x2**
HB103-48

Rocker Body
HB103-06

Internal Snap Ring x2
XVHM-21

12x21x3 Spacer x2
HB101-49

Internal Snap Ring x2
XVHM-22

Trunnion Shock Screw x2
HB103-15

Rocker Axle
HB103-12

Internal Snap Ring x2
XVHM-28

Rocker pivot Bearing x2
17x28x9

17x24x3 Spacer x2
HB101-13

Trunnion Mount Bearing x2
10x22x6-9

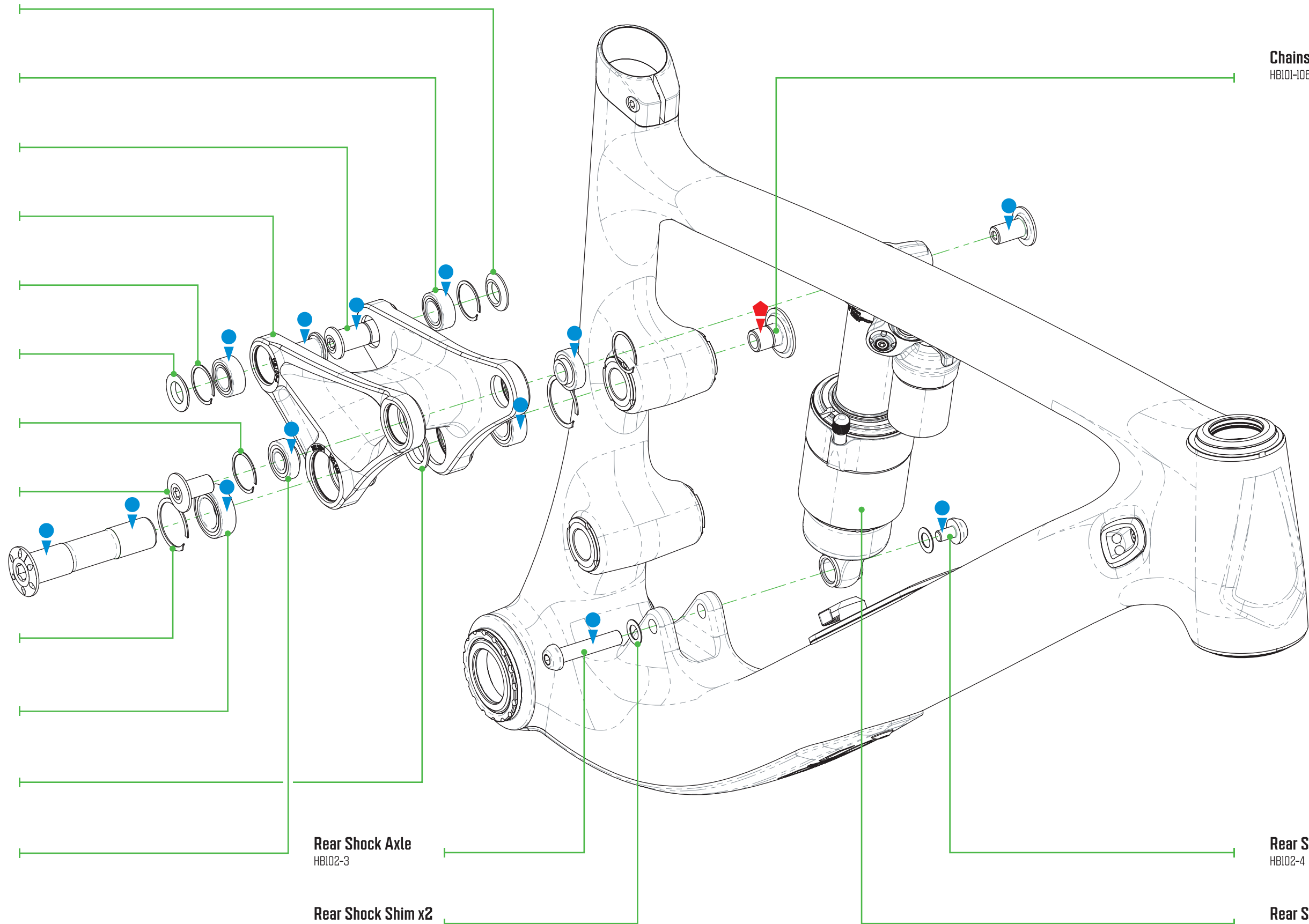
Rear Shock Axle
HB102-3

Rear Shock Shim x2
HB102-41

Chainstay/Rocker bolt
HB101-106

Rear Shock Screw
HB102-4

Rear Shock
Trunnion 205x65
Ø8x21.84Hardware



HB.916

ROCKER DETAIL

Rear Pivot Bearing x2
20x32x7

20x24x3 Spacer x2
HB103-23

Chainstay
HB916-CS

CS Screw x2
M4x8

Cable Exit Block x2
HB103-57

Chainstay Protector
HB103-44

Idler Pulley Cage
HB103-72

Idler Pulley Bearing
12x28x8

Idler Pulley Bolt
HB103-70

Chainstay Axle
HB103-11

Chainstay/Rocker Bolt
HB101-106

Chainstay Pivot Bearing x2
17x28x7

Internal Snap Ring x2
XVHM-28

17x24x3 Spacer x2
HB101-13

Idler Pulley Inner Spacer
HB103-68

Idler Pulley
HB103-71

Idler Pulley Circlip
HB103-73

Idler Pulley Outer Spacer
HB103-69



Apply Grease
on face or thread



Apply low strength
Threadlock on thread

6mm Flip Chip x2

HB103-49

Seatstay

HB916-ST

NDS Dropout Pivot Screw

HB103-8

Rear Axle

HB103-19

24x36x1 Washer x2

HB103-58

NDS Dropout

HB103-22

SRAM UDH

HB102-60 std
HB103-5 aluminium

DS Dropout Pivot Screw Washer

HB103-60

Seatstay Protector

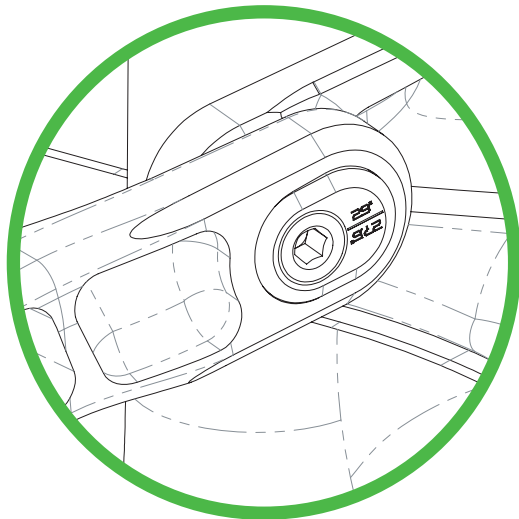
HB103-51

DS Dropout Pivot Screw

HB103-7

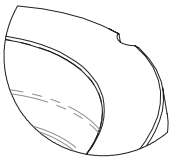
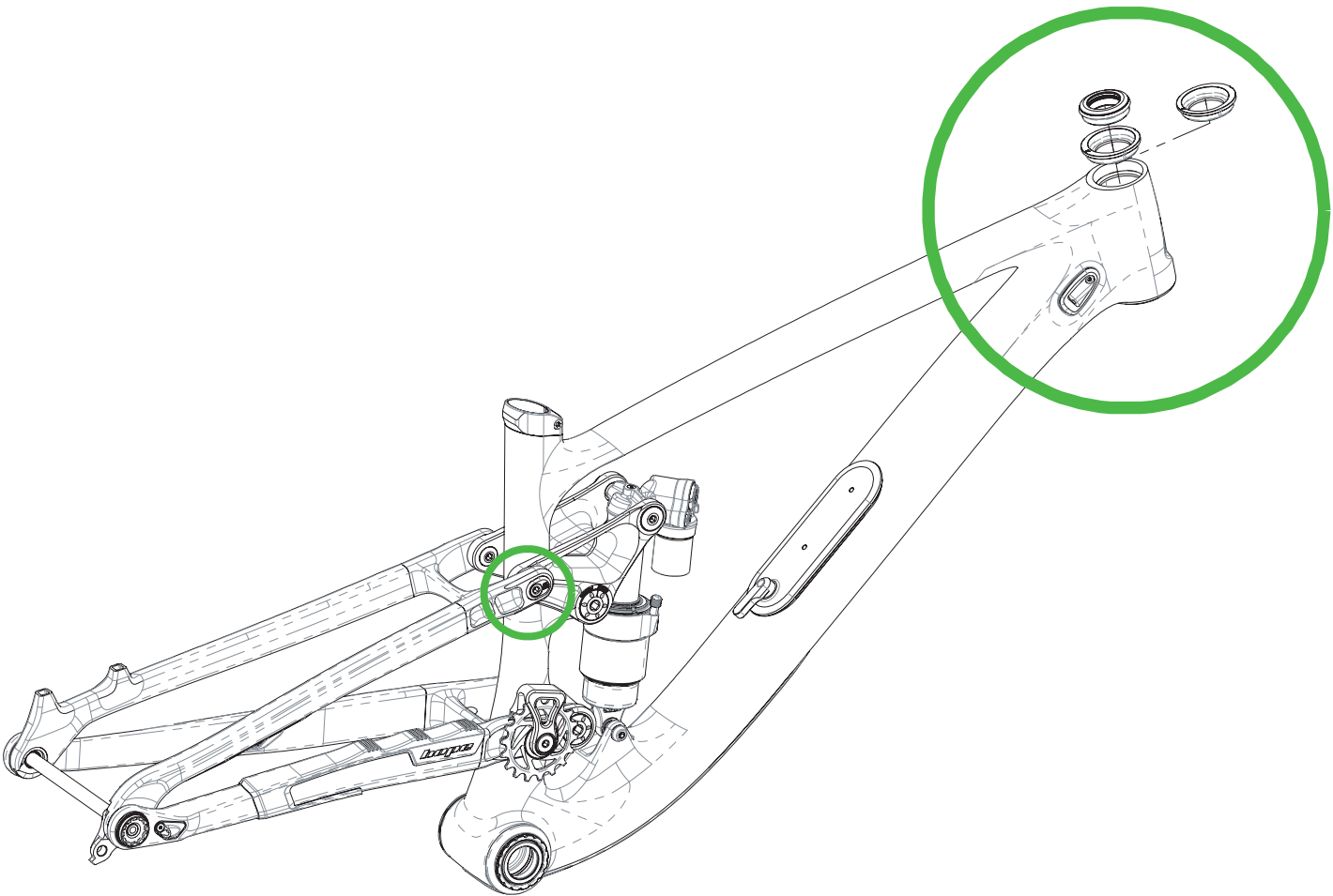
HB.916

SEATSTAY DETAIL

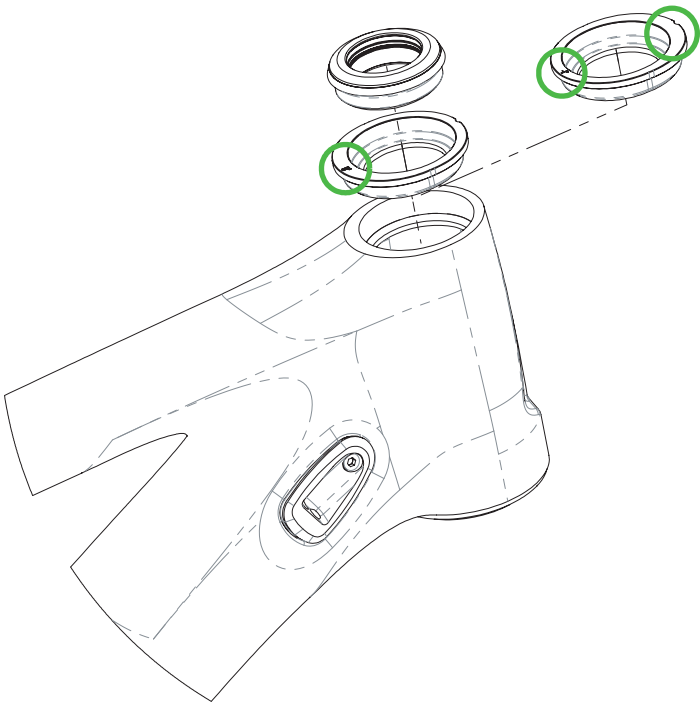


Wheel Size Adjustment

To switch between 29" and 27.5" rear wheel size, on both sides of the rocker change the orientation of the Flip Chip. When the Pivot Bolt is on the rearward position use a 29" wheel. When the pivot bolt is on the forward position use a 27.5" wheel. The writing pointing up on the drive side Flip Chip indicates what wheel size you should use (29" on exemple above).



Front Notch
Pointing **forward**.



Head Angle Adjustment

To adjust the head angle **only the Top Cup** needs changing. Use the 0° engraved cup to achieve a **64° head angle** (STD setting). Use the -1° engraved cup to achieve a **63.2° head angle** (Slack setting). On installation be aware that the notch is pointing **forward**.

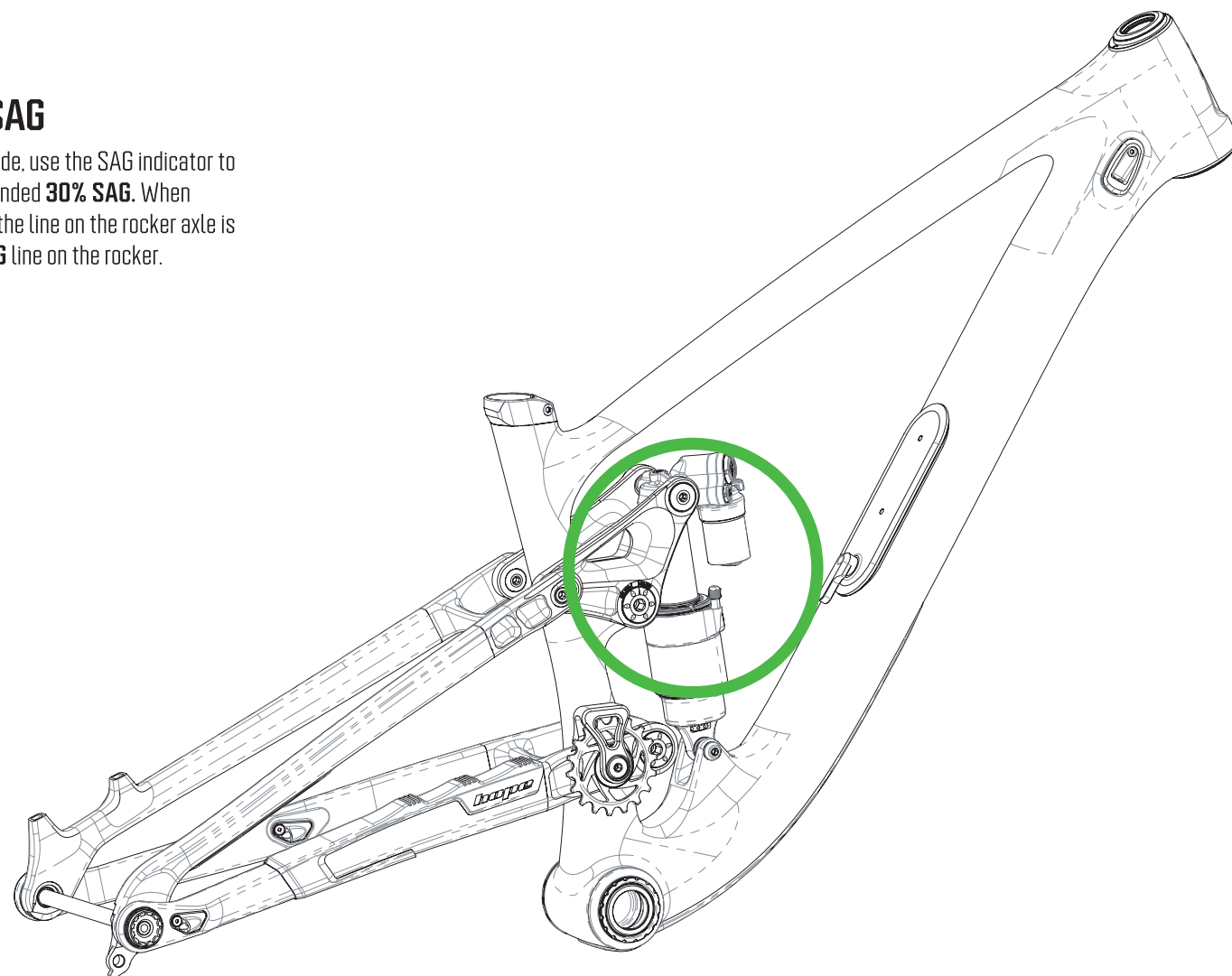
0° Engraved Cup



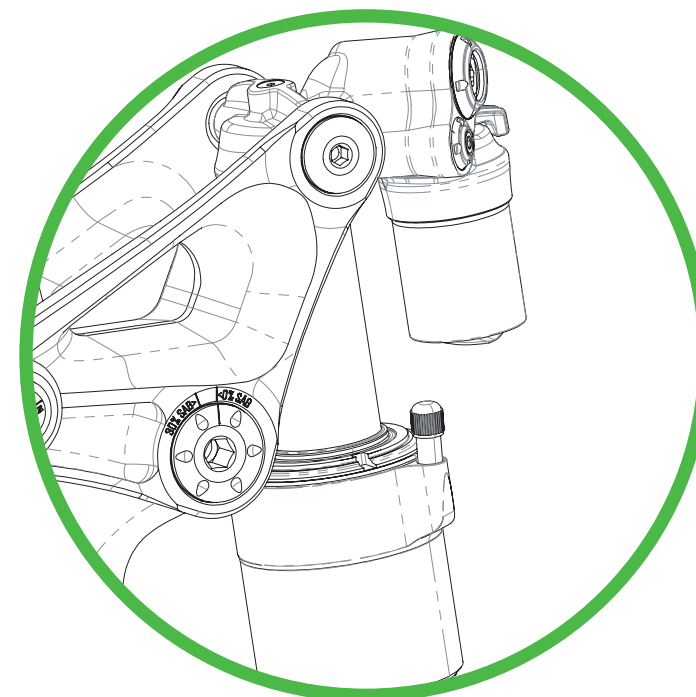
-1° Engraved Cup



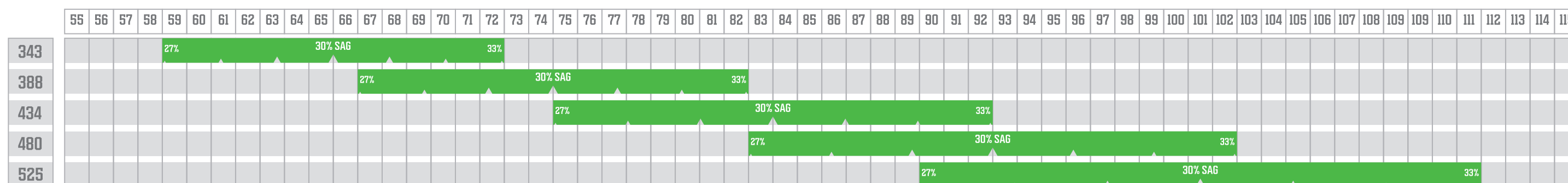
On the rocker Drive Side, use the SAG indicator to achieve the recommended **30% SAG**. When unloaded, make sure the line on the rocker axle is matching the **0% SAG** line on the rocker.



Sag Indicator



Spring Rate* (lb/in)



This chart aims to give you a good starting point with your rear shock spring rate. It makes several assumptions and **does not** take into account personal preferences or riding styles. **Recommended sag is 30%**, this will give a good balance for all types of riding. For increased traction and smoother riding styles more sag may work well (33%). For

*The spring rates listed are the choices available when purchasing a HB.916, other spring rates are available aftermarket.

MATERIAL	Carbon Fibre Monocoque Front Triangle, Hybrid Aluminium/Carbon Rear Triangle
COLORS	Raw Carbon, Chameleon, Neutral
FRAME SIZING	H1, H2, H3, H4
FORK TRAVEL	170mm
FORK AXLE TO CROWN	584mm
FORK OFFSET	44mm
REAR TRAVEL	160mm
REAR SHOCK	205mmx65mm
SHOCK HARDWARE	Trunnion Top - Ø8x21.84mm bottom
RECOMMENDED SAG	27 to 33%
WHEEL SIZE	29" or 27.5"
MAX TYRE SIZE	2.6" (od Ø760mm max, width 75mm max)
REAR HUB	Boost 148x12
REAR AXLE	Hope HB103-19
DERAILLEUR HANGER	SRAM UDH
REAR BRAKE MOUNT	Postmount 180
HEADSET TOP	Hope HS-HB916-U0 (0°) or HOPE HS-HB916-U1 (-1°)
HEADSET BOTTOM	Hope HS-HB916-L
BOTTOM BRACKET	89.5mm Shell - T47
CHAINLINE	51mm
MAX CHAINRING	36T
SEATPOST DIAMETER	Ø31.6
MAX SEATPOST INSERTION	290mm on H1 and H2 sizes, 320mm on H3 and H4 sizes
SEATPOST CLAMP	Ø34.9 Custom
FRAME BEARING LIST	17x28x7 (x2), 20x32x7 (x2), 17x28x9 (double row x2), 12x21x8 (double row x2), 10x22x6/9 (x2)